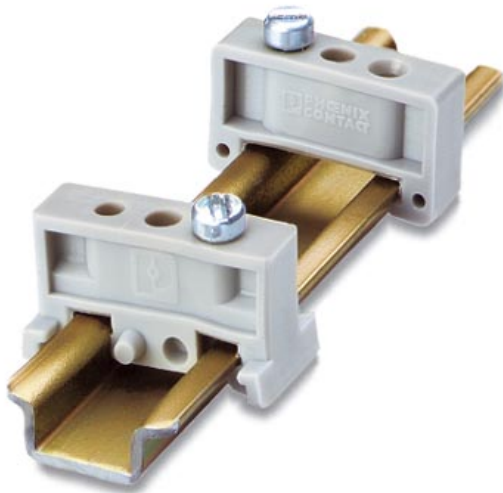


Please note that the data given here has been taken from the online catalog. For comprehensive information and data, please refer to the user documentation at <http://www.download.phoenixcontact.com>. The General Terms and Conditions of Use apply to Internet downloads.

► Extract from the online catalog



End bracket, width: 6.2 mm, color: gray

The illustration shows a combination of versions E/MBK, E/MK and E/MK 1, on mounting rail NS 35/7,6

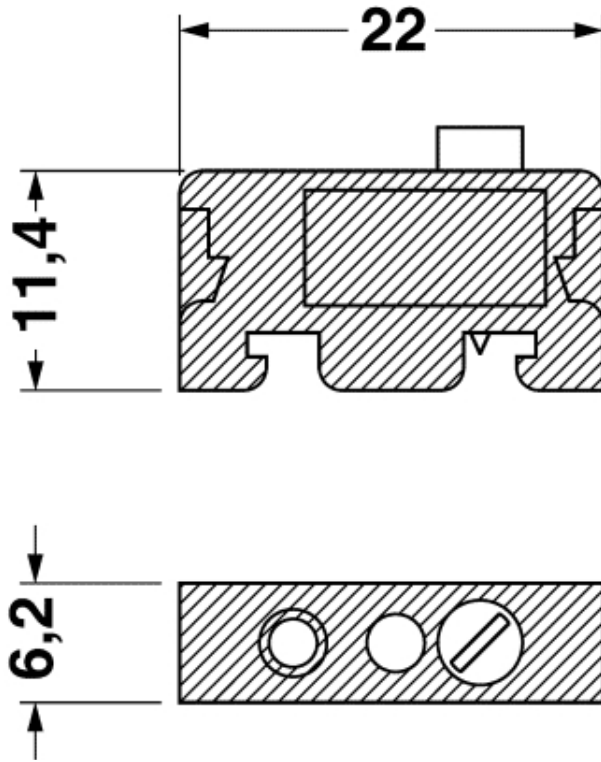
Order No.	1421633
Ord designation	E/MK
EAN	4017918021559
Pack	100 Pcs.
Customs tariff	85369010
Catalog page information	Page 442 (CL-2005)

► Technical data

General	
Length	22 mm
Width	6 mm
Color	gray
Inflammability class acc. to UL 94	V2
Material	PA
Temperature indices (RTI/TI)	125/100

► Drawings

Dimensioned drawing



► Accessories

Item	Designation	Description
Assembly		
1401682	NS 15 PERF 2000MM	DIN rail, material: steel, perforated, height 5.5 mm, width 15 mm, length: 2 m
1401695	NS 15 UNPERF 2000MM	DIN rail, material: Steel, unperforated, height 5.5 mm, width 15 mm, length: 2 m
1401763	NS 15-AL GELOCHT METER	DIN rail, material: Aluminum, perforated, height 5.5 mm, width 15 mm, length: 2 m

► Address

PHOENIX CONTACT Inc., USA
586 Fulling Mill Road
Middletown, PA 17057
USA
Phone (800) 888-7388
Fax (717) 944-1625
<http://www.phoenixcon.com>
Phoenix Contact
Technical modifications reserved;